

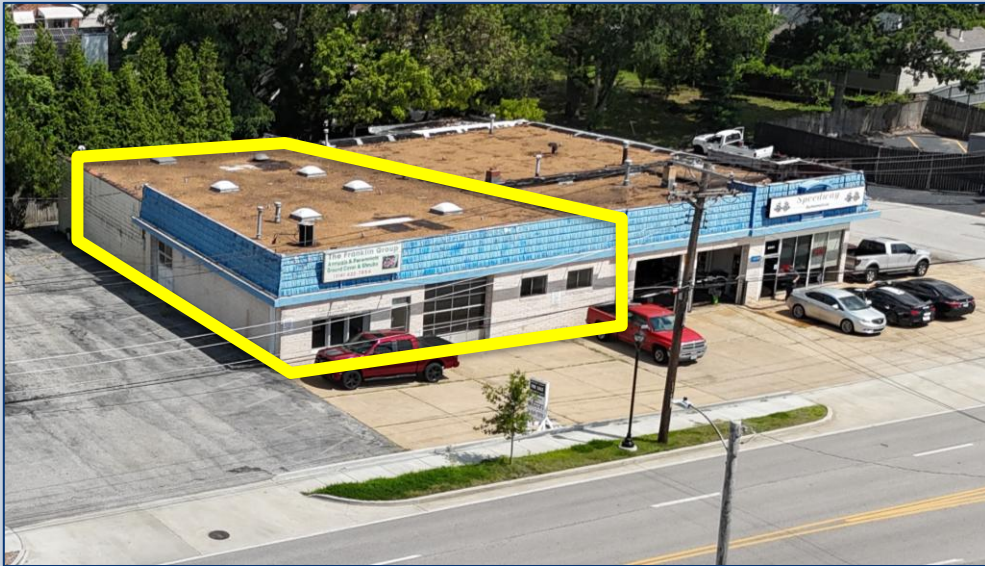


5,300 SF for lease

**8925 MANCHESTER RD
BRENTWOOD, MO 63144**

SCOUT | REALTY GROUP

for lease



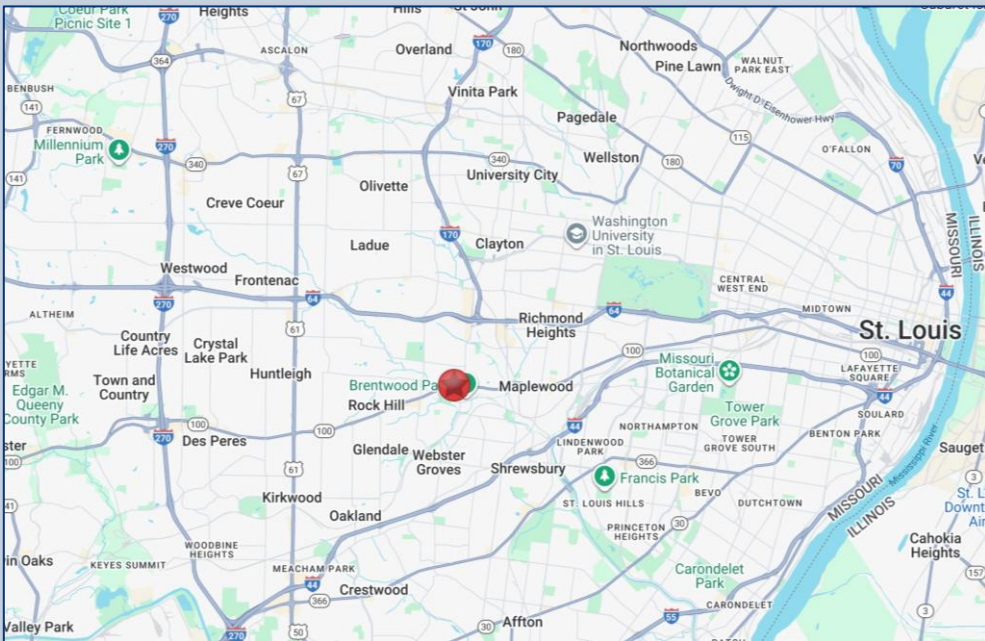
end-cap

8925 Manchester Rd – City of Brentwood

PROPERTY DESCRIPTION

- ▲ **5,300 SF End-Cap available for Lease**
- ▲ 14,000sf +/- retail center located just west of Manchester and Brentwood across from Schnucks Grocery.
- ▲ Serving the dense residential communities of Brentwood, Richmond Heights, Maplewood, Rock Hill, Ladue and Webster Groves.
- ▲ Excellent visibility and exposure to over 18,500 vehicles per day on Manchester Rd

FOR LEASE: \$15 psf NNN



Proposed Improvements include a new façade, landscaping, parking lot and lighting.



SCOUT

**REALTY
GROUP**

13100 Manchester Rd. Ste. 235
St. Louis, MO 63131
314.394.2022 | scoutrg.com

Kelly Long
klong@scoutrg.com
314-566-1556

pictures



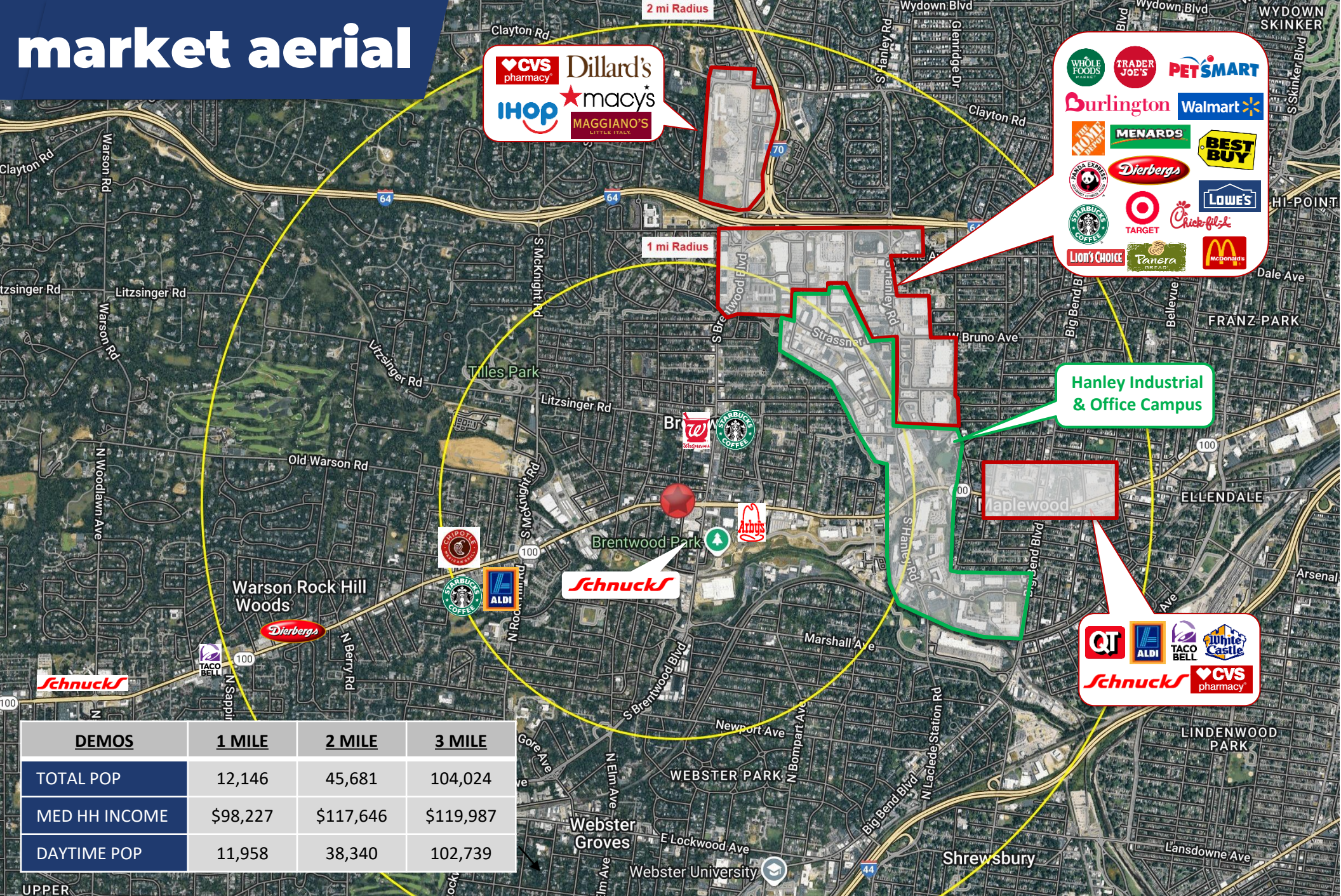
SCOUT

**REALTY
GROUP**

13100 Manchester Rd. Ste. 235
St. Louis, MO 63131
314.394.2022 | scoutrg.com

Kelly Long
klong@scoutrg.com
314-566-1556

market aerial



SCOUT
REALTY
GROUP

13100 Manchester Rd. Ste. 235
St. Louis, MO 63131
314.394.2022 | scoutrg.com

Kelly Long
klong@scoutrg.com
314-566-1556

The information herein has been obtained from the owner/landlord of the subject property or other sources that Scout Realty Group deems reliable. The information is not warranted and is subject to change without notice. Owner/landlord and Scout Realty Group make no representations as to the environmental condition of the property and recommend tenant perform an independent investigation.

site plan

- ▲ 5,300 SF +/-
- ▲ 60' of Frontage
- ▲ 2 Garage Door Entry's



**8931
GIFTED
GARDENER**

**GARAGE
DOOR**

★ **8925
AVAILABLE**

**8901
SPEEDWAY**

**GARAGE
DOOR**

18,665 VPD

TENANTS

- 8901 – Speedway Automotive
- 8925 – 5,300 sf Available**
- 8931 – Gifted Gardener

SCOUT

**REALTY
GROUP**

13100 Manchester Rd. Ste. 235
St. Louis, MO 63131
314.394.2022 | scoutrg.com

Kelly Long
klong@scoutrg.com
314-566-1556