



SCOUT | REALTY GROUP

RETAIL FOR LEASE
7318 Olive Blvd
University City, MO

7318 Olive Blvd – University City, MO

RETAIL FOR LEASE

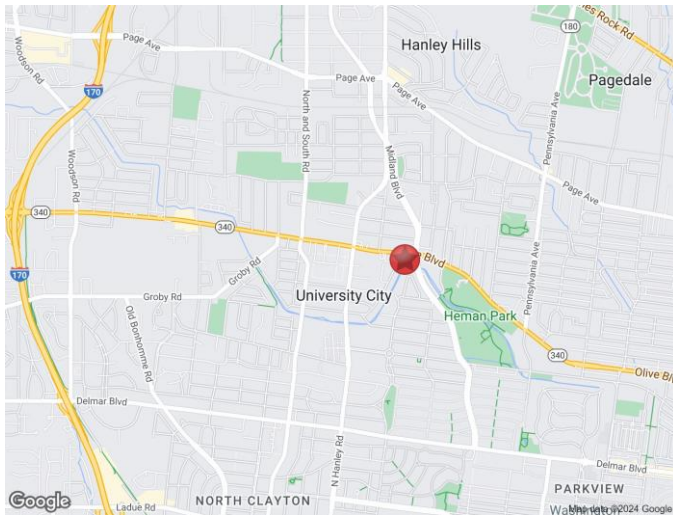


FORMER FAMILY DOLLAR FOR LEASE

7318 Olive – University City, MO

\$13.50 PSF NNN

- 9,475 Square Feet
- Excellent Visibility and Signage
- OLIVE - 15,972 VPD
- MIDLAND – 4,139 VPD
- 1.70 Miles From Costco Redevelopment
- 1.40 Miles From Downtown Clayton
- 1.40 Miles From Washington University
- .30 Miles to University City High School



2023 TOTAL POP	<u>1 MILE</u> 16,656	<u>2 MILE</u> 58,909	<u>5 MIN DT</u> 41,411
2023 MED HH/\$	<u>1 MILE</u> 85,984	<u>2 MILE</u> 104,318	<u>5 MIN DT</u> 99,517
2023 DAY POP	<u>1 MILE</u> 3,542	<u>3 MILE</u> 59,436	<u>5 MIN DT</u> 48,033

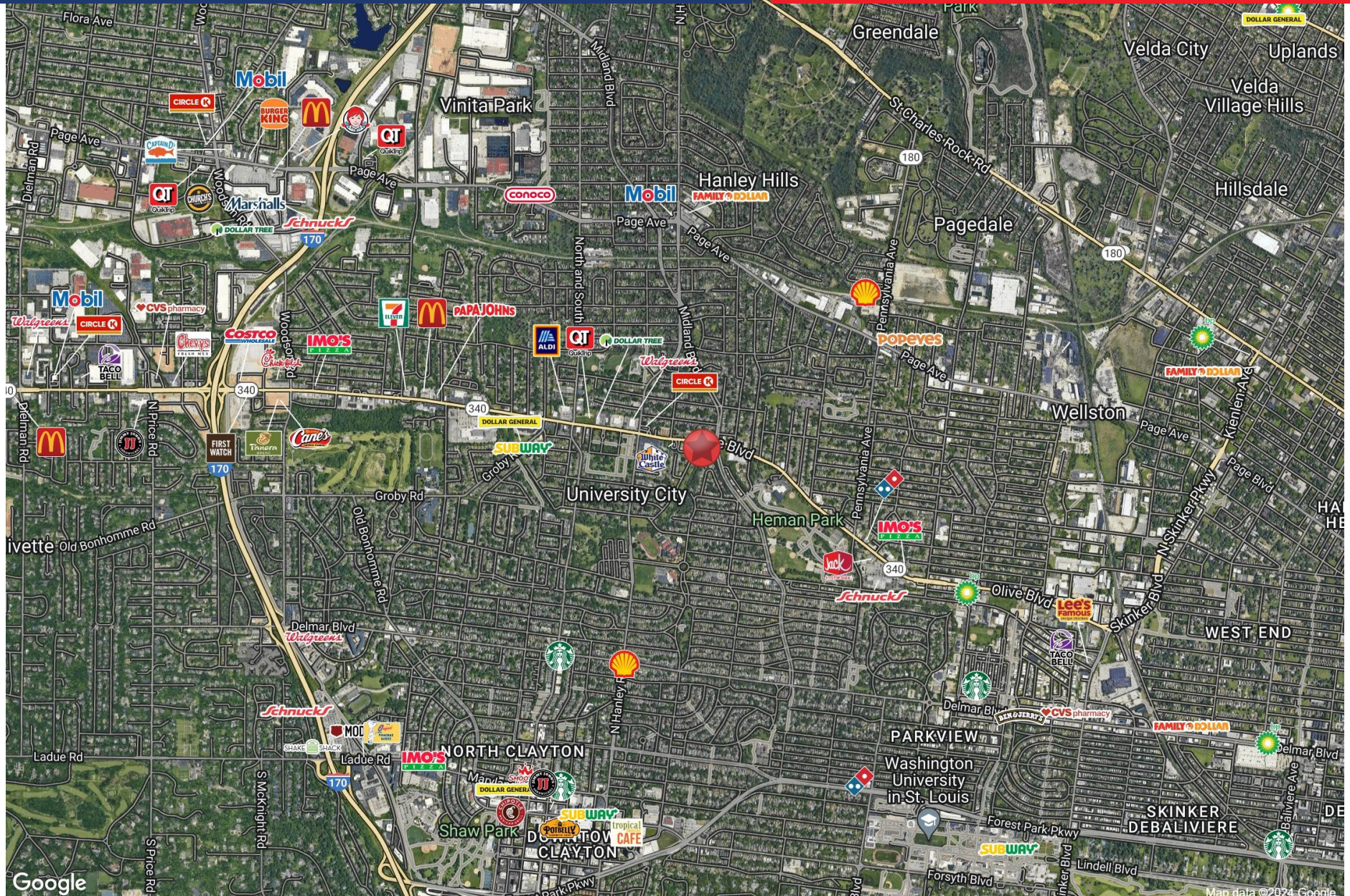
SCOUT

**REALTY
GROUP**

13100 Manchester Rd. Ste. 235
St. Louis, MO 63131
314.394.2022 | scoutrg.com

CHRIS ZOELLNER
314-814-4220
czoellner@scoutrg.com

JARED HANCOCK
314-623-6419
jhancock@scoutrg.com



SCOUT

**REALTY
GROUP**

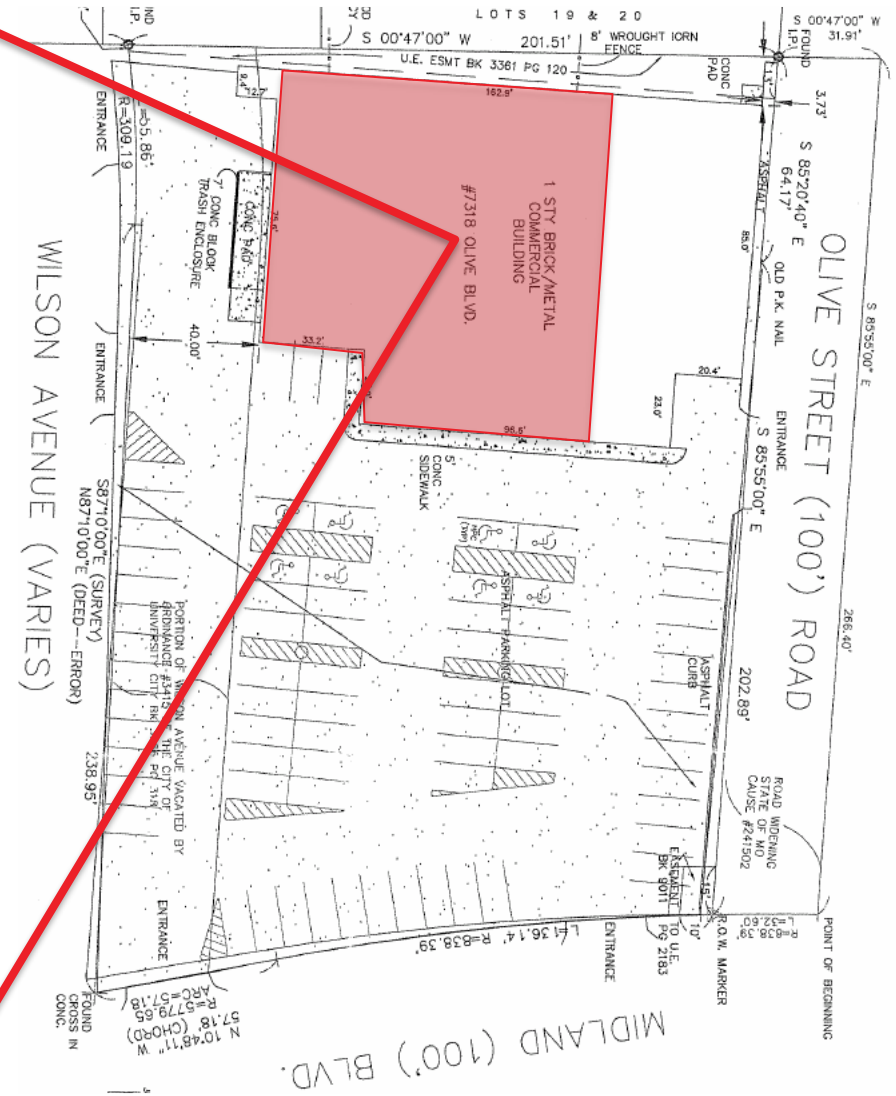
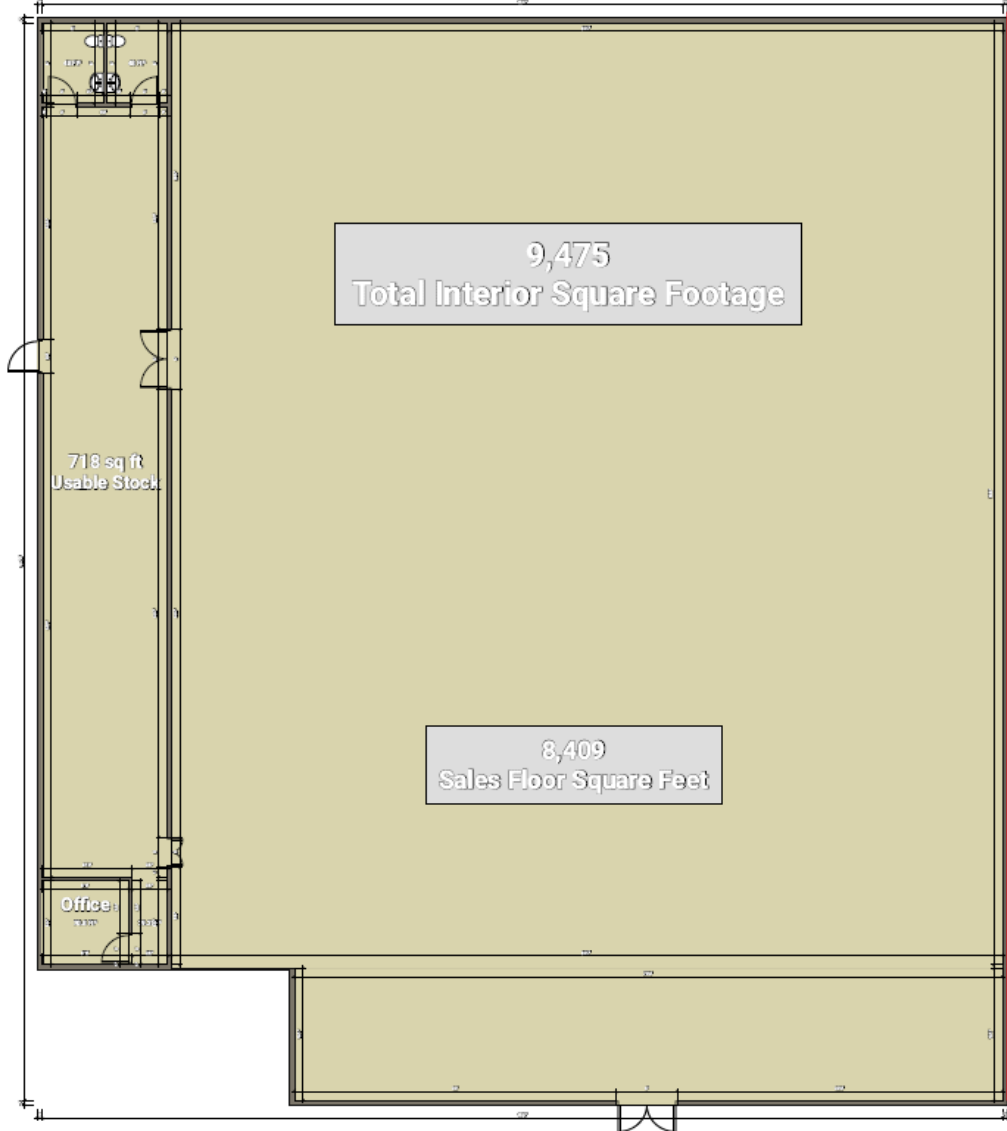
13100 Manchester Rd. Ste. 235
St. Louis, MO 63131
314.394.2022 | scoutrg.com

CHRIS ZOELLNER
314-814-4220
czoellner@scoutrg.com

JARED HANCOCK
314-623-6419
jhancock@scoutrg.com

7318 Olive Blvd - University City, MO 63130

RETAIL FOR LEASE



SCOUT

REALTY GROUP

13100 Manchester Rd. Ste. 235
St. Louis, MO 63131
314.394.2022 | scoutrg.com

CHRIS ZOELLNER
314-814-4220
czoellner@scoutrg.com

JARED HANCOCK
314-623-6419
jhancock@scoutrg.com