

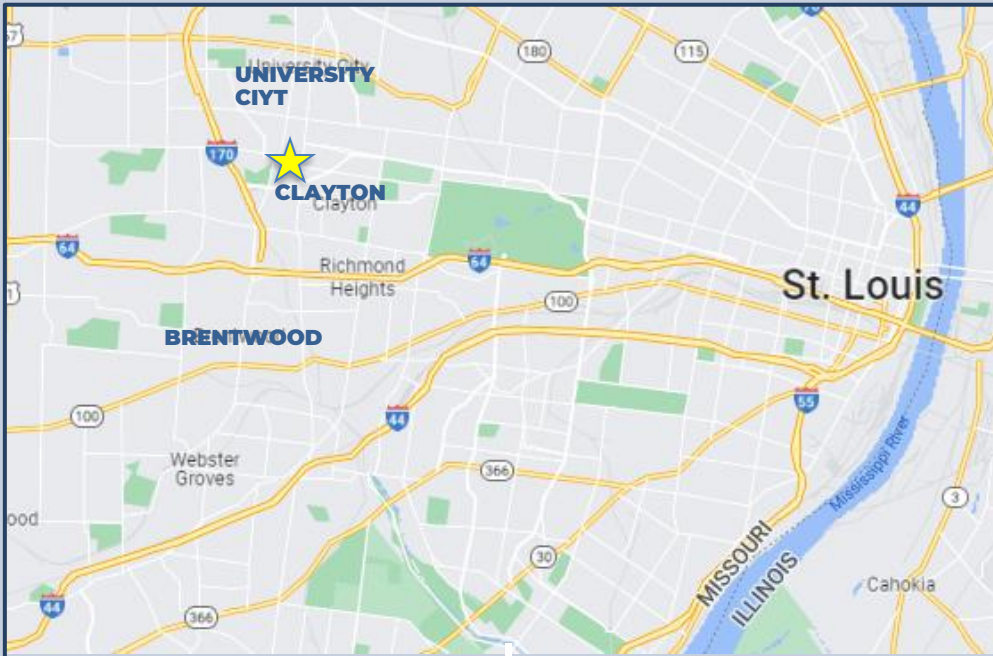
FORMER RESTAURANT SPACE AVAILABLE!



SCOUT | REALTY
GROUP

Ceylon Shops
33 N Central Ave
Clayton, Missouri

ceylon shops



**33 N Central Ave
Clayton, MO 63105**

PROPERTY DESCRIPTION

- ▲ **2,126 SF Furnished Restaurant space available for Lease**
- ▲ Newly constructed Ceylon mixed use project with 120 Luxury apartment (99% leased) and 13,585 SF of Retail
- ▲ Sidewalk widened to accommodate outdoor seating
- ▲ Centrally located within Clayton, St. Louis County's central business district with over 8 Million square feet of prestigious office space and daytime pop of 52,841 people
- ▲ Join Co-Tenants:



FOR LEASE: \$34 PSF NNN

<u>DEMOS</u>	<u>1 MILE</u>	<u>3 MILE</u>	<u>CLAYTON</u>
TOTAL POP	17,627	112,712	16,112
MED HH INCOME	\$122,267	\$86,487	\$106,078
DAYTIME POP	51,994	119,731	52,841

SCOUT

**REALTY
GROUP**

13100 Manchester Rd. Ste. 235
St. Louis, MO 63131
314.394.2022 | scoutrg.com

Jared Hancock
jhancock@scoutrg.com
314-623-6419

clayton aerial



LEGEND

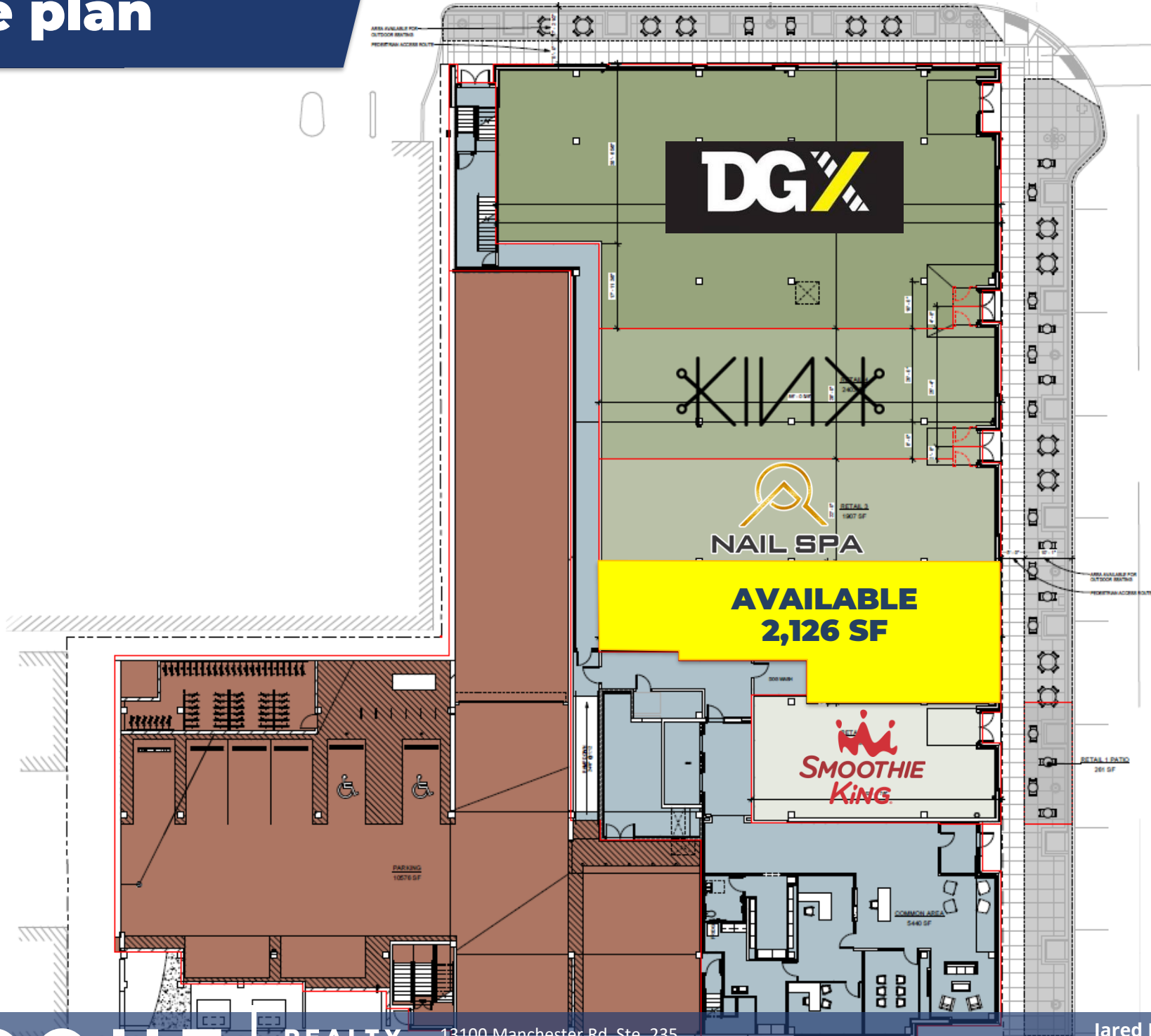
RESIDENTIAL TOWER

HOTEL

site plan

MARYLAND AVE

CENTRAL AVE



SCOUT

REALTY
GROUP

13100 Manchester Rd. Ste. 235
St. Louis, MO 63131
314.394.2022 | scoutrg.com

Jared Hancock
jhancock@scoutrg.com
314-623-6419

photos (March 2023)



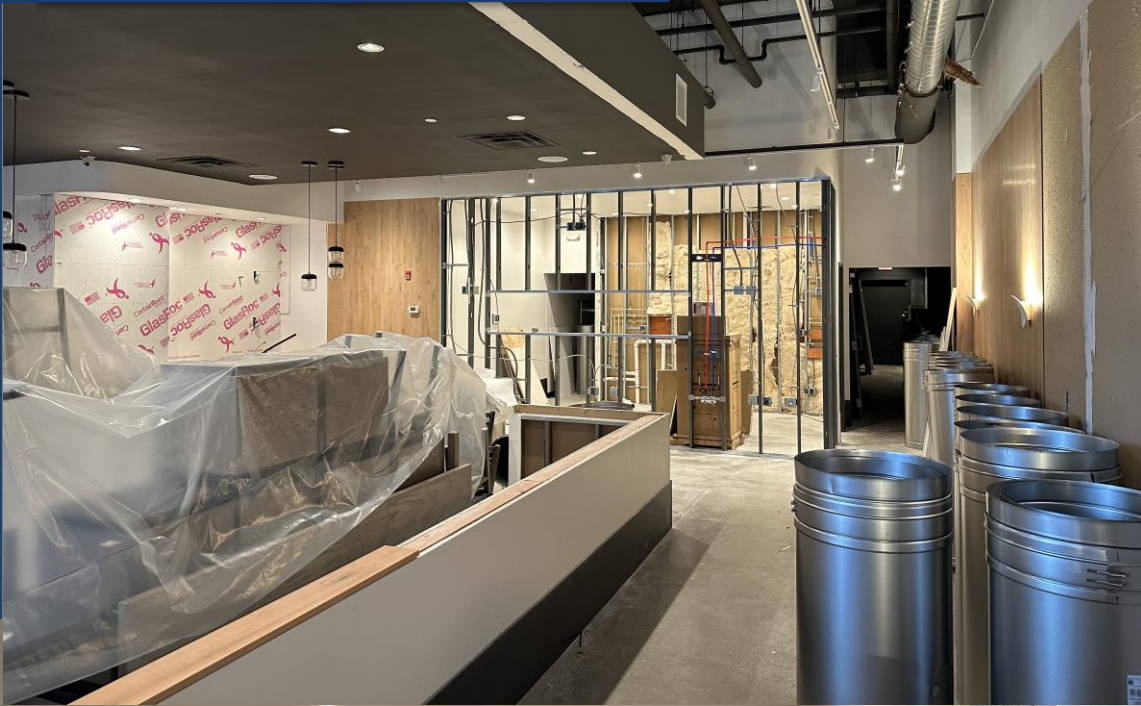
SCOUT

**REALTY
GROUP**

13100 Manchester Rd. Ste. 235
St. Louis, MO 63131
314.394.2022 | scoutrg.com

Jared Hancock
jhancock@scoutrg.com
314-623-6419

Photos (May 2024)



SCOUT

**REALTY
GROUP**

13100 Manchester Rd. Ste. 235
St. Louis, MO 63131
314.394.2022 | scoutrg.com

Jared Hancock
jhancock@scoutrg.com
314-623-6419