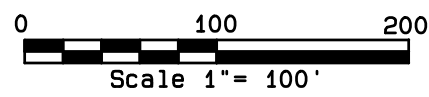


# Plat of Boundary Survey

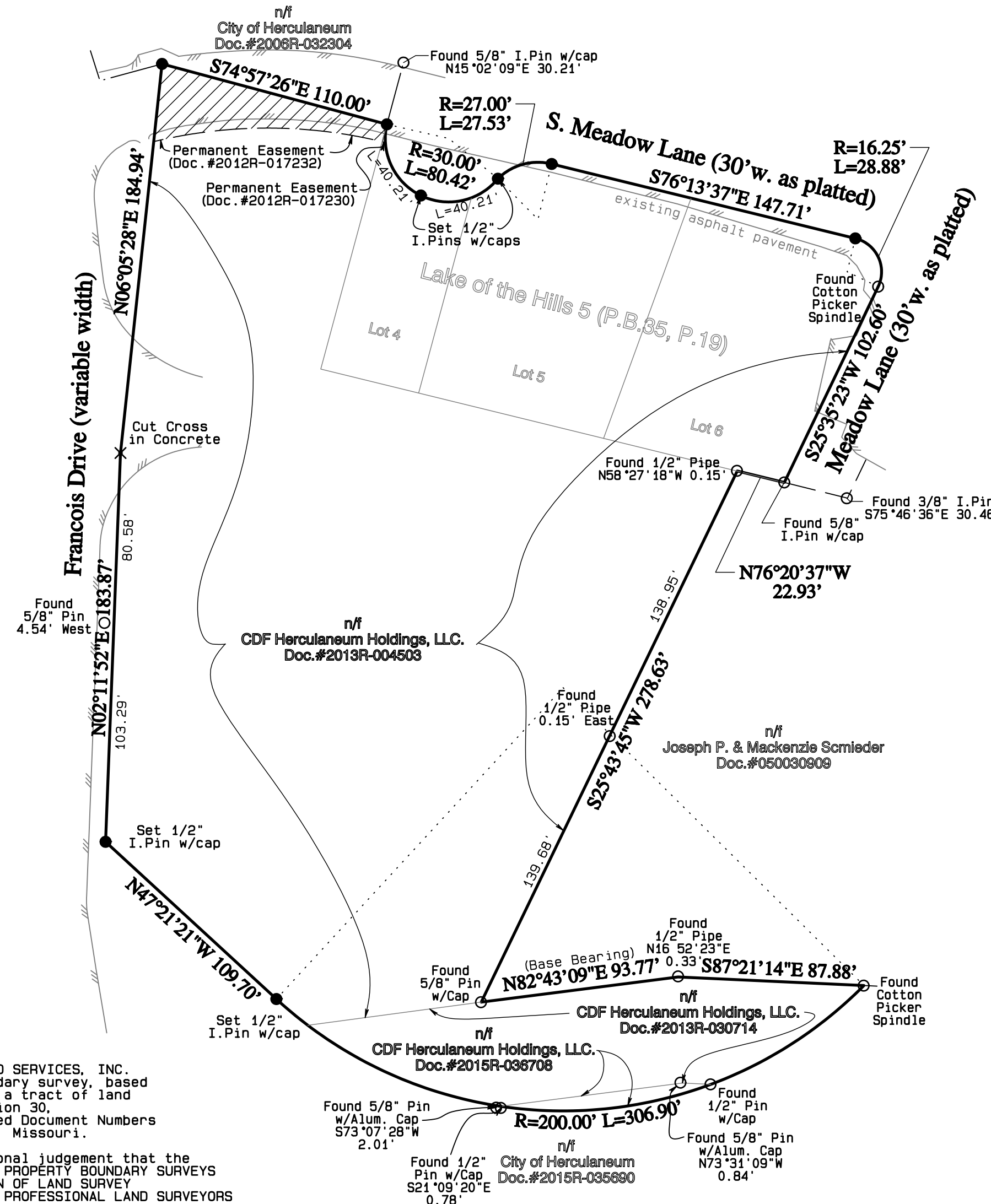
of Lots 4, 5 and 6 of Lake of the Hills Add. 5 (P.B.35, P. 19A) and Part of Section 30, Township 41 North, Range 6 East of the Fifth Principal Meridian, Jefferson County, Missouri.



North from Previous Govero Land Services Survey



● = Set Cotton Picker Spindle in Asphalt  
(unless noted otherwise)



**SURVEYOR'S CERTIFICATE**

This is to certify to the best of my belief, knowledge, and ability that GOVERO LAND SERVICES, INC. at the request of Curtis Francois, during the month of April, 2018, prepared a boundary survey, based on field information obtained on 03/20/18 by field personnel under my direction, on a tract of land being Lots 4, 5 and 6 of Lake of the Hills Add. 5 (P.B.35, P. 19A) and Part of Section 30, Township 41 North, Range 6 East of the Fifth Principal Meridian, as described in Deed Document Numbers 2013R-004503, 2013R-030714 and 2015R-036708 of the Land Records of Jefferson County, Missouri.

I also declare that under my supervision and to the best of my ability and professional judgment that the results shown hereon are made in accordance with the current MISSOURI STANDARDS FOR PROPERTY BOUNDARY SURVEYS for URBAN PROPERTY, as set forth by the MISSOURI DEPARTMENT OF AGRICULTURE, DIVISION OF LAND SURVEY and rules promulgated by THE MISSOURI BOARD FOR ARCHITECTS, PROFESSIONAL ENGINEERS, PROFESSIONAL LAND SURVEYORS AND LANDSCAPE ARCHITECTS, effective June 30, 2017.

IN WITNESS WHEREOF, we hereunto set our firm name at our office in Jefferson County, Missouri on this \_\_\_\_ day of \_\_\_\_\_, 2018.

GOVERO LAND SERVICES, INC. 242.D  
By DANIEL L. GOVERO LS#1778  
MISSOURI REGISTERED LAND SURVEYOR

<b>GOVERO LAND SERVICES</b> SURVEYING * ENGINEERING 5929 OLD STATE ROAD IMPERIAL, MO. 63052 PH:(636)464-9380 FAX:(636)464-9626 email: info@goverolandservices.net	FIELD WORK BY	T.R. / C.D.
	DRAWN BY	K.A.D.
	CHECKED BY	D.L.G.
	SHEET NO.	1 of 1
	JOB NO.	98114-B

1:\98114\98114.dwg 4/27/2018